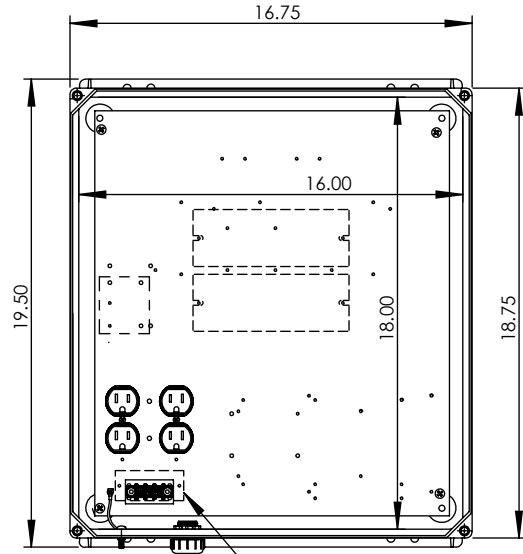


THE INFORMATION CONTAINED IN THIS DRAWING IS THE SOLE PROPERTY OF L-COM, INC. ANY REPRODUCTION IN PART OR WHOLE WITHOUT THE WRITTEN PERMISSION OF L-COM, INC. IS PROHIBITED.

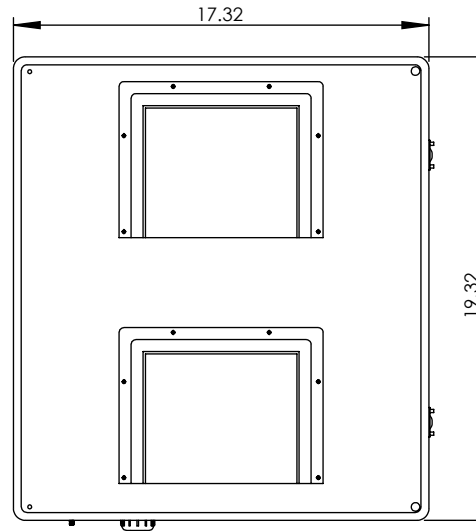
REVISIONS			
REV	DESCRIPTION	DATE	APPROVED
A	INITIAL RELEASE	01/07/13	D.GRIFFIN
-	-	-	-
-	-	-	-

FRONT VIEW-COVER REMOVED



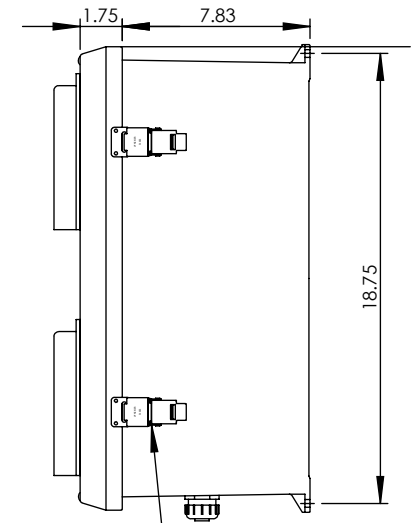
HIDDEN LINES REPRESENT COMPONENTS ON BACK OF PLATE --DO NOT DRILL--

FRONT VIEW



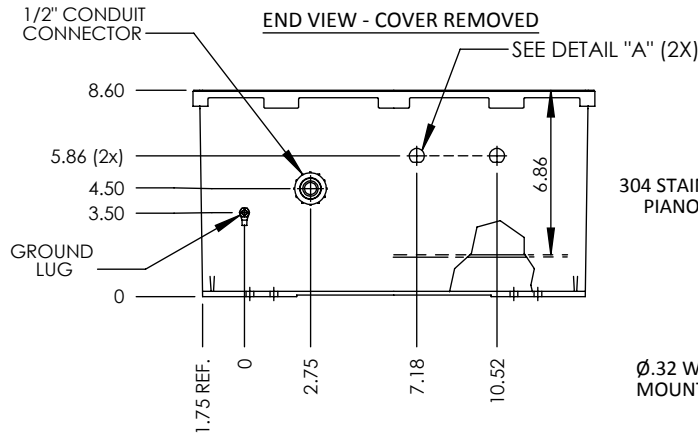
END VIEW

RIGHT SIDE VIEW



316 STAINLESS STEEL PADLOCKABLE LATCHES
Ø.375 PADLOCK EYE

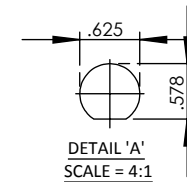
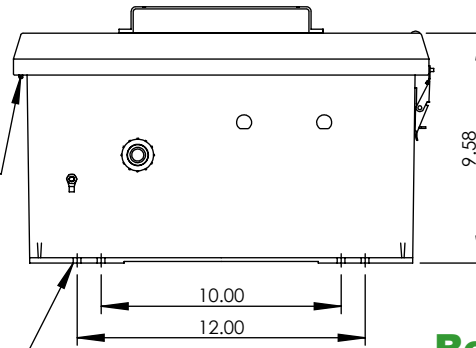
END VIEW - COVER REMOVED



SEE DETAIL "A" (2X)

304 STAINLESS STEEL PIANO HINGE

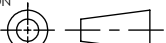

Ø.32 WALL MOUNTING HOLE (8X)



DETAIL 'A'
SCALE = 4:1

RoHS Compliant ✓

- NOTE:
- 1- ENCLOSURE MATERIAL-GRAY (RAL7035) HOT MOLDED FIBERGLASS REINFORCED POLYESTER
 - 2- NEMA RATED TYPE 3, 3R, 3S, 4, 4X, 12 AND 13 PRIOR TO MODIFICATIONS.
 - 3- IEC 529 RATED IP 66 PRIOR TO MODIFICATION.
 - 4- TEMPERATURE RANGE FROM -50 DEG C TO 150 DEG C.
 - 5- SELF EXTINGUISHING AND HALOGEN FREE.
 - 6- CABINETS ARE MAINTENANCE FREE AND CORROSION RESISTANT.
 - 7- SHALL BE PACKAGED AS PER L-COM SPEC PKG-00070
 - 8- ALL DIMENSIONS FOR REFERENCE ONLY

UNLESS OTHERWISE SPECIFIED, DIMENSIONS ARE IN INCHES [mm] DIMENSIONAL TOLERANCES: .X = ±.1 .XX = ±.01 .XXX = ±.005 ANGULAR TOLERANCES: ALL = ± 1° PROJECTION 	APPROVALS	DATE	 Global Connectivity 45 BEECHWOOD DRIVE NORTH ANDOVER, MA 01845		
	DRAWN BY B.PUCHASKI	01/07/13			
	CHECKED BY P.PESA	01/07/13	CATEGORY ENCLOSURES		
	APPROVED BY P.PESA	01/07/13			
	CONFIGURATION DETAILS OF UNDIMENSIONED FEATURES MAY VARY		PRODUCT DESCRIPTION NEMA ENCLOSURE 18 X 16 X 8 WEATHERPROOF 120VAC VENTED W/HEATER SOLD STATE		
	COLOR VARIATIONS MAY OCCUR	SIZE A	FSCM NO. 43321	DWG. NO. NB181608-1H0S	REV. A
		SCALE: NONE CAD FILE: NB181608-1H0S.SLDDRW			SHEET 1 OF 1